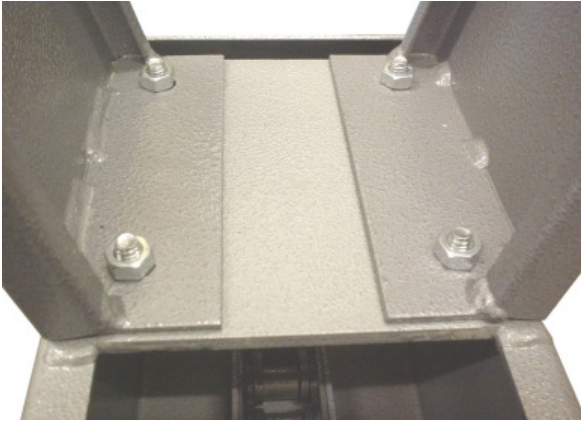


Twin Speed, Draw Bench Assembly Instructions

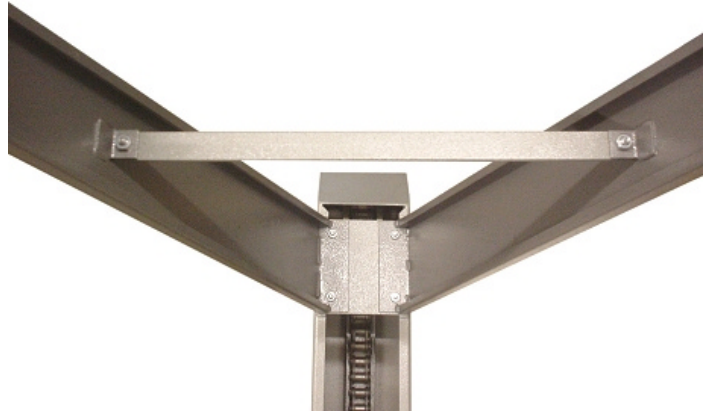
Page 1 of 1

1. Attach the 4 legs



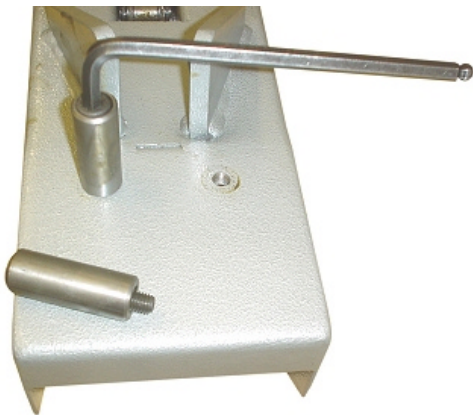
Carefully lay the draw bench on it's back (chain facing down) and screw on the four legs using the nuts and bolts provided. Ensure you lay the draw bench on something soft so you do not damage the paintwork

2. Fit the 2 cross pieces



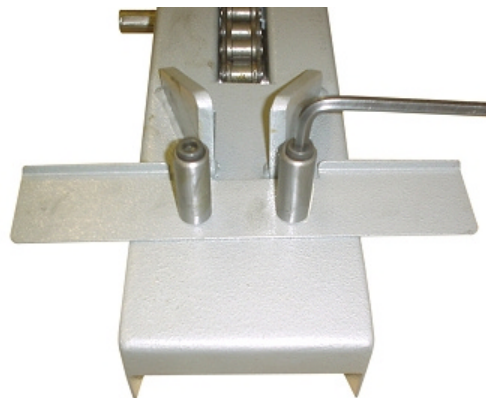
Screw the two cross pieces using the nuts and bolts provided

3. Remove Support Pins



Stand the Draw Bench on its legs and unscrew the two support plate pins

4. Fit Draw Plate Support



Insert the draw plate support and then bolt up using the two pins

www.durston.com

Durston Rolling Mills - British Made - In use Worldwide - Registered British Design

All rights reserved. No part of the publication may be reproduced, stored in a retrieval system or transmitted in any form or by any means, electronic, mechanical, photocopying, recording or otherwise, without the prior permission of the copyright owner.